

CERTIFICATE OF LOCATION OF GOVERNMENT CORNER

EAST QUARTER Corner of Section 9, Township 107, Range 39, 5TH P.M.

STATE OF MINNESOTA, County of MURRAY

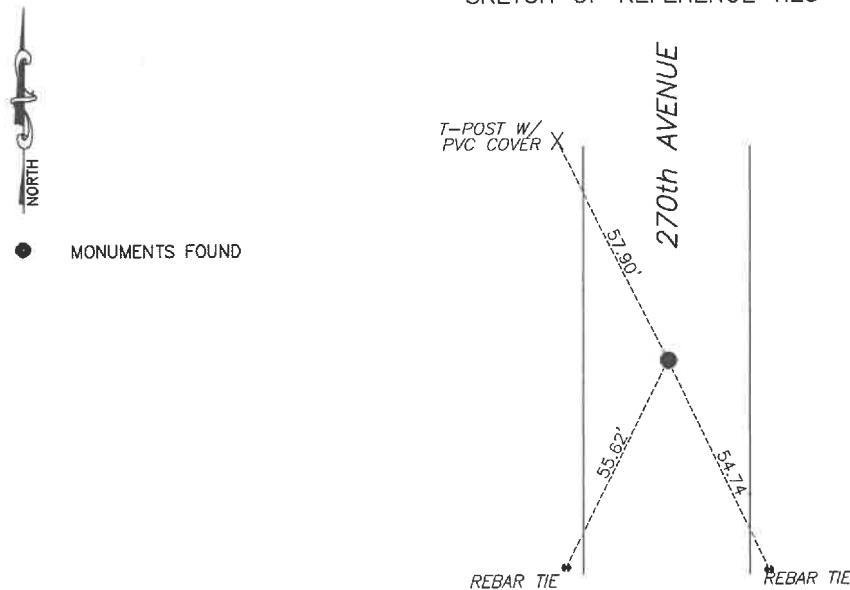
At the corner location shown on the sketch:

☒ On 6/7/2024 found a 1/2" iron #44996.
DATE

☒ left monument as found, ☐ lowered monument, ☐ removed monument (explain)

☐ On _____ placed a _____
DATE

SKETCH OF REFERENCE TIES



Murray County
Coordinate System NAD83 (1996)

N: 187282.157
E: 564090.196

WGS84

LAT: 44°05'13.9540"
LON: -95°31'21.9728"

Statement of evidence relative to this corner location is on back of page.

I hereby certify that this document and the data contained herein was prepared by me or under my direct supervision.

Daniel L. Bueltel
License No. 43844

3/12/2025
DATE

MAR 13 2025

MURRAY COUNTY RECORDER

Statement of Evidence

EAST QUARTER CORNER SECTION 9, T107N, R39W of the 5th P.M.

In July of 1861, J.W. Myers surveyed the township lines.

In September of 1861, L. Brockmann subdivided the township.

In December 2019 a survey in section 9 by Jesse Zeig shows that he set a $\frac{1}{2}$ " iron and cap LS #44996 at the corner.

In September 2020 Westwood Professional services searched and found an iron with cap at the corner.

On June 7, 2024 Bueltel-Moseng Land Surveying found a $\frac{1}{2}$ " iron with survey cap #44996.